

a new Era of
VERTICAL LIVING

बेटी नहीं तो
फ्लैट नहीं ...



Office: 4th Floor, Real Heaven Business Arcade,
Opp. Vandana Hospital, Mangla, Bilaspur (C.G.)

Rera No: PCGRERA110122001318

Note : This brochure is only a conceptual presentation and not a legal offering.
The promoters reserve the right to make changes in elevation, plans and specifications

The logo for Queen's Phase II. It features the word 'QUEEN'S' in a large, gold, serif font. To the left of the 'Q' is a circular gold emblem containing a stylized, swirling pattern. Below 'QUEEN'S' is the word 'PHASE II' in a smaller, gold, sans-serif font. A small red 'FM' logo is positioned above the 'S' in 'QUEEN'S'.

WORD'S OF FOUNDER

A heartfelt thankyou to the people of Bilaspur & Chhattisgarh for showing such an overwhelming response and faith to FM Queen's and Firstman Group.

Over the years, Firstman has built a reputation for being a leading real estate company in Bilaspur and we take great pride in the long-term relationships we have forged, highlighting the strengths within our core values and culture of the business. As a result of our prudent approach, we have grown steadily and remained resilient despite challenging market conditions, making impressive progress in a short period of time.

Our Flagship project Fm Queen's inspired us to create another Landmark project in the same area, we have taken a vision to give a next level of living experience for the people of Bilaspur. FM Queen's Tower will be a luxury property with the vision to transform and redefine living standards in Bilaspur. It will be one of the Tallest High-Rise Residential Tower (G+7) spreading over expansive acres of tranquility and surrounded by lush open green spaces. A touch of elegance and luxury living which will elevate your status to its fullest.

We are truly looking forward to the same love, faith and support from the people of Chhattisgarh which you have been showering on us since 2016. In future too we assure you to supply our best of services towards advancement in projects, Quality Development, Timely Delivery and Service Excellence.

Your continuing support is highly appreciated.

Thankyou

MURTUZA HUSSAIN

**BEST
DEVELOPMENT
LIFESTYLE
A GIFT TO
BILASPUR
FROM FM GROUP**





Feeling privileged to be part of this project and the group. they are always in pursue of giving the best to their clients and society. The faith they shown on me encourage me to try harder. High rise buildings with all technical needs like earthquake resistant structure, firefighting system, waste disposal, automation, terrace garden etc. are common, we were continuously trying

and looking for something innovative and unique. And then we come up with a design idea with the help of modern construction technology, we are enabling the buyer to make their dream come true. This technology provides the flexibility and freedom to the buyer to reshape their own unit and become the part of the creator of the unit. The exterior of the buildings is formed with quality materials and texture which is simple and modern yet class apart from the other developments.

The Tower layout occupies approx. 29454 sqft of the project layout area and thus the layout generates around 65% of open area at ground floor level that includes lush green landscaped areas, driveways and open parking spaces. The planning also generates open spaces at various levels, both at individual levels and at community levels making it environment friendly and a paradise to stay in.

The master plan of this residential project conceives a high-quality residence offering the latest home comforts. I can say the sincerity and hard efforts they are putting in this with great intention will surely create a world-class development.

ER. ABHISHEK SHRIWASTAWA

BE A PART OF
NEVER
EXPERIENCED
BEFORE' LIVING
IN ONE OF THE
TALLEST HIGH-
RISE BUILDINGS
IN THE CITY OF
BILASPUR.





PARADISE

IS ONLY

PARADISE

IF YOU'RE

THERE

WELCOME TO

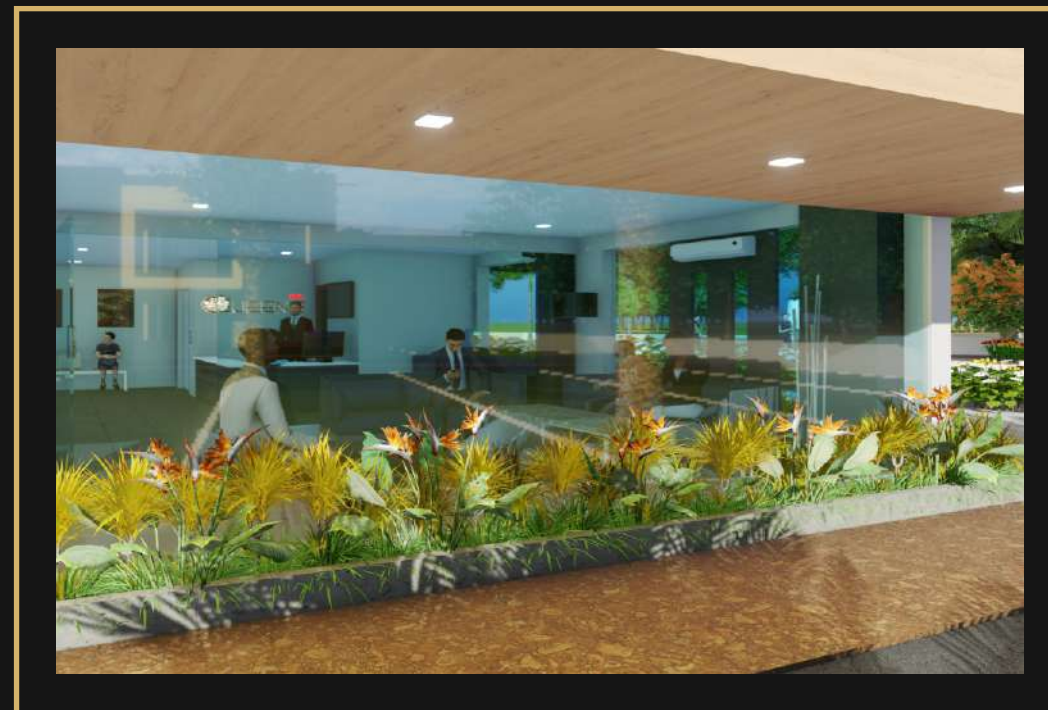
 **QUEEN'S**
SMART HOMES
PHASE II

Set in peaceful and serene surroundings, FM Queen's

Tower makes the right choice for families who seek a life filled with happiness, peace of mind and a flawless standard of living. Be proud

of prestigious status with

FM Queen's Tower.



GRAND RECEPTION

Pretty much everyone hates waiting. We offer you a beautiful waiting room for those moments when your Cab or Food is on its way. We take full responsibility to provide great ambience to the people who are waiting for you.

UNISEX GYM

Your body hears everything that your mind says. We provide you a top-class gymnasium which will help you to remain healthy and fit in the no-time-to-care city life.



A GREEN FOOTPRINT IMPECCABLE STYLE

The importance of natural greens and fresh air is irreplaceable. Balconies with natural landscaped gardens fulfil this need flawlessly and offer you fresh, naturally purified air to breathe and live in.



- MEETING AREA
- MINI THEATER
- POOL TABLE
- INDOOR GAMES AREA
- PARTY HALL
- KITCHEN

We take luxury to a new level with a lavish clubhouse that boasts of luxury, a plethora of indoor games and more services that fulfill your dream of maintaining a premium lifestyle.

Q2 CLUB for your GOOD TIME





Corridors

A place where neighbors connect. Our exquisitely designed corridors will give you pleasant time with the neighbors and visiting guests. It comprises 3 spacious lifts, 2 stairs, with a stretcher lift.



Magnificent apartments complemented by absorbing landscape views deliver the **dream of living** in true harmony with yourself, your family and the neighbors. It is the time where you witness all your dreams come true.

CONSTRUCTION DETAILS

STRUCTURE

- RCC Framed Structure With Aac Brickwork.
- Earthquake Resistant Structure

FLOORING

- 2 X 4 Vitrified Glossy Tiles Flooring In All Major Areas.
- Antiskid/Matt Finish Tiles For Toilets, Wash Area, Balconies And Porch Area.

KITCHEN

- Granite On Kitchen Platform.
- Steel Sink With Sink Cock.
- Dado Tiles Upto 2' Above Platform.
- Electrical Points For Refrigerator, Chimney, Water Purifier, Microwave.
- Gas Pipeline

BATHROOM

- Wall Tiles Upto 8' Height.
- ISI BRANDED White Sanitary Ware Including Wall Hung Commode/Indian Pan Seat/
Floor Mounted Commode Of Proper
Brand Along With Branded Cp Finish Bathroom Fittings.

DOOR & FRAME

- DOOR & FRAME
- All Other Doors Shall Be Wooden Door Frames Along With Laminated Flush Door Shutters.
- Mortise Door Lock In All Bedrooms & Main Door
- All Bathrooms With Pvc Shutter Door.
- Granite Wall Frame For All Rooms Door / Windows

WINDOW

- Upvc 3 Track Window Along With Mosquito Net.
- All Windows Of Upvc Glazed With Granite Framing.

ELECTRIFICATION

- Concealed, Fire Resistant High Quality Wiring.
- Ample Light Points As Per Standard Furniture Layout.
- Standard Make Or Equivalent Modular Switches.
- All Electrical Wiring Will Be Under Ground
- Exhaust Wiring In Toilets And Kitchen.
- Inverters, Ac Wiring.

WALL FINISHES

- Internal Walls Finished With Wall Care Putty.
- External Walls Finished With Weather Proof Paint.
- Asian Paint With First Quality On Indoor & Out Door

CELLING

- False Celling All Rooms And Hall (Living Area)

DRAINAGE

- Systematic Under Ground Drainage

OPTIONAL

- Modular Kitchen With Chimney - 125000
- Smart Home - 120000
- Digital Door Lock - 28000



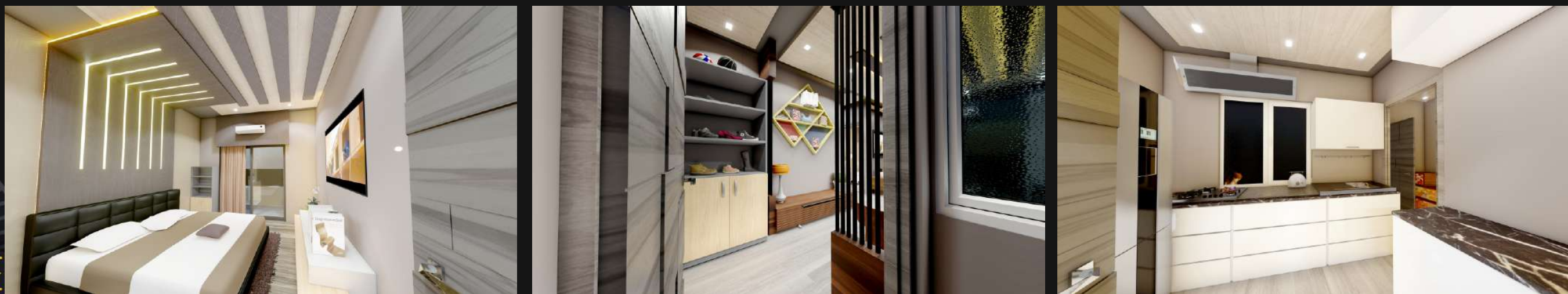


A MODERN TAKE ON
BAREFOOT LUXURY



A LAVISH FOOTPRINT
4 BHK LUXURIOUS FLAT

A MODERN
TAKE ON
BAREFOOT
LUXURY



A MODERN LUXURY FEEL
2 BHK LUXURIOUS FLAT

SEPARATE COMMON AREA (FINISHING) SPECIFIC DETAILS THAT PROMISES UNMATCHED LUXURY

BUILDING FLOOR PLAN

PARKING

- Finished with heavy duty floor tiles.
- 3 nos lift for passenger and staircase 02 no.
- Open parking area, landscaping, greenery, illumination, Set back walking area.

FOR REMAINING STRUCTURE

- Staircase with granite tread in steps and riser with matching tiles.
- SS railing in staircase with 3' ht clad with matching tiles.
- Main lobby with double charged vitrified flooring.
- Reception and waiting area secured with glazed doors.
- Reception and waiting area with full body vitrified flooring.

ELECTRIFICATION

- Three phase wiring.
- Wire thickness as required Of Havells, Polycab, RR brand.
- Backup for lift and common lights with generator 3 phamf panel.

EXTERNAL WALL FINISH

- Wall care with primer.
- Wall putty.
- Acrylic emulsion.

EXTERIOR WALL FINISH

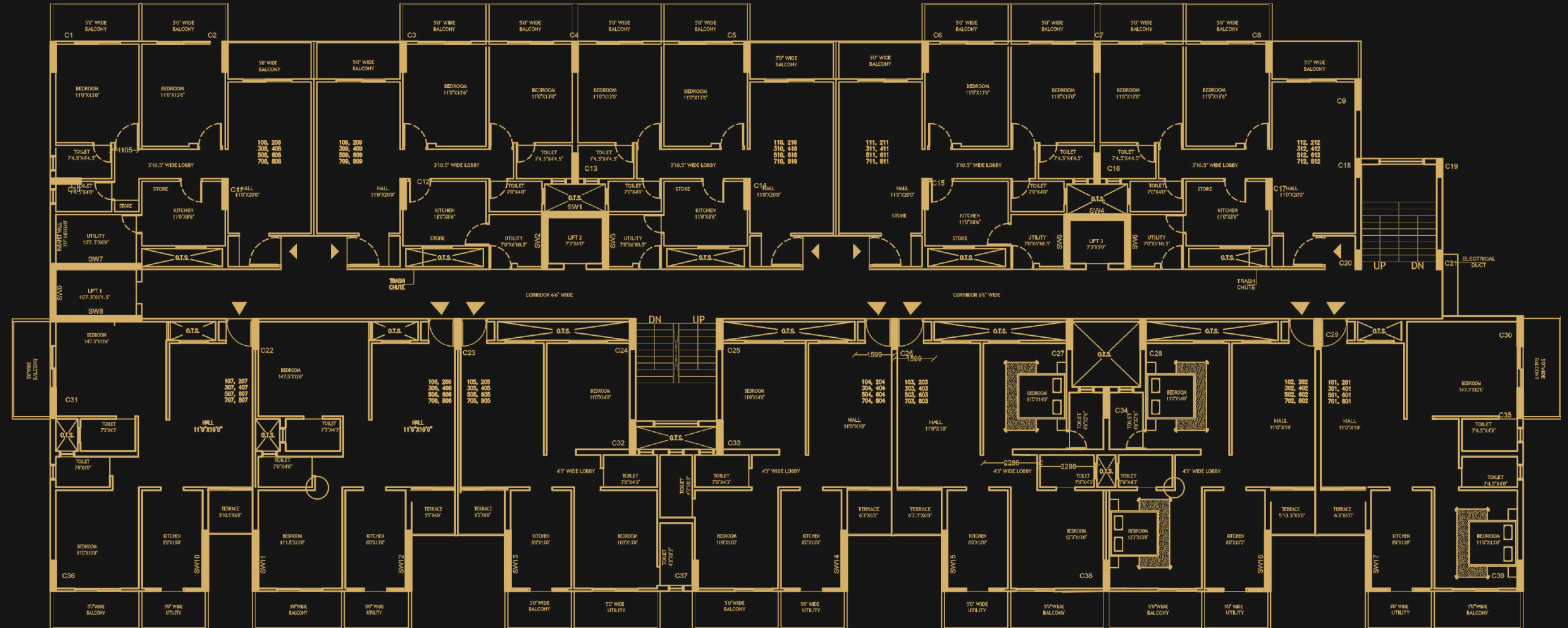
- Exterior emulsion Asian ultima with exterior primer.
- Balconies with glass railing and SS top

SECURITY FEATURES







- CCTV in common area, entrance, parking area.
- Fire fighting as per norms.
- Intercom Service With Lobby

SERVICES

- Common Bio-digester.
- Garbage collection bin.





- 
 Jain Intrnation School
2.5 KM
- 
 36 Mall
3.0 KM
- 
 New Bus Stand
7 KM
- 
 Uslapur Railway Station
3 KM
- 
 Mangla Chowk
3.0 KM
- 
 On 80 Feet
Wide Road

DISTANCE FROM SITE

1. JAIN INTERNATIONAL SCHOOL	2.0 KM
2. DENTAL COLLEGE	2.0 KM
3. KANAN PENDARI ZOO	3.0 KM
4. SAKRI MARKET	1.0 KM
5. NH 130 (RAIPUR - KORBA)	0.5KM
6. USLAPUR RLY STATION	3.0 KM
7. 36 MALL	3.5KM
8. COLLECTORATE OFFICE	4.0 KM
9. CHAKARBHATA AIRPORT	15 KM

